

The Bulletin



CONGREGATION
B'NAI ISRAEL

Congregation B'nai Israel, Elizabeth, NJ - Affiliated 1992

January 2015

NEW JERSEY'S #1 PARTY SHOWCASE

Planning a Bar/Bat Mitzvah, Wedding, Sweet 16 or Party?

DJ's • Photographers • Videographers • Party & Photo Favors • Entertainers
Balloon Specialists • Invitations • Photo Booths • Variety Entertainment • Kosher Caterers



Photo by Sweet Dreams Studio

SUN. JAN. 4
11:00-2:00 pm

Congregation B'nai Israel

160 Millburn Ave | Millburn, NJ

REGISTER
ONLINE

partyshowcases.com
908-665-4165

REGISTER
ONLINE



Congregation B'nai Israel L'Dor V'Dor Speaker Series

Sunday, February 8, 2015

Breakfast at 9:15 a.m. // Presentation at 10:00 a.m.



Brad Hirschfield

Rabbi, Author and President,
Clal-The National Jewish Center for Learning and
Leadership

Check Your Core Values at the Door

What are the Common Denominators in American Jewry?

As American Jews, we are blessed to live in the freest, most integrated Diaspora in the world. But with this diversity comes challenges and tensions. Rabbi Hirschfield will share a unique perspective on how Jews can take full advantage of the strengths and diversity we possess as a spiritual and intellectual tradition to create and embrace a caring, nurturing and sacred Jewish identity and community.

This event is free and open to the public.

Please [RSVP](#) by February 2 at www.cbi-nj.org.

Listed for many years in Newsweek as one of America's "50 Most Influential Rabbis," and recognized as one of our nation's leading "Preachers & Teachers" by Beliefnet.com, Rabbi Brad Hirschfield is the author of *You Don't Need to be Wrong for Me to Be Right: Finding Faith Without Fanaticism*, and the Co-founder and Executive Editor of The Wisdom Daily website. Rabbi Hirschfield is the President of Clal-The National Jewish Center for Learning and Leadership, a leadership training institute, think tank and resource center committed to religious pluralism and the healthier use of religion in American public life. An expert of religion and public life as well as an interfaith activist, Hirschfield speaks and consults widely on the American spiritual landscape and political and social trends.



CONGREGATION
B'NAI ISRAEL

160 Millburn Avenue
Millburn, NJ 07041
973-379-3811
www.cbi-nj.org

Shabbat Services

Kabbalat Shabbat	8:15 pm
Shabbat Morning	9:00 am
Tefilot Yeladim (Grades 3-6)	10:15 am
Tefilot Ketanim (K-2)	10:30 am
Tot Shabbat (Preschool)	10:30 am
Shabbat Journeys Minyan (1/10)	10:45 am
Valdeinu (1/3)	10:30 am

Candle Lighting

January 2	4:23 pm
January 9	4:29 pm
January 17	4:37 pm
January 23	4:45 pm
January 30	4:54 pm

Mincha/Havdallah

January 3	4:38 pm/5:38 pm
January 10	4:44pm/5:44 pm
January 18	4:52pm/5:52 pm
January 24	5:00 pm/6:00 pm
January 31	5:09 pm/6:09 pm

Minyan Rotation

Noval – Plump	December 29 – January 3
Podhoretz – Renner	January 4 – January 10
Retik – Russo	January 11 – January 17
Sabin – Schneider	January 18 – January 24
Schor – Shapiro	January 25 – January 31

This is a reminder that you are scheduled on the Minyan Rotation List for the month of **October**. ***We urge you to make every effort to attend minyan, the times are listed below.***

Morning Minyan	Evening Minyan
7:10 am Mon. & Thurs.	8:00 pm Sun.-Thur.
7:15 am Tues., Wed. & Fri.	
8:30 am Sun.	

Let's Kvell Together!

Send us your simchas!
New baby, engagement, marriage,
anniversary, milestone birthday...
Special honor or recognition
in the community...
You get the idea!

Share your joy with your CBI
family... let's kvell together!
Send your information to:
Ana Amorim at anaa@cbi-nj.org.

FROM THE RABBI'S DEN

By Rabbi Steven Bayar

The word “outreach” has become attractive in the Jewish community. In light of the Pew Study we are all engaged in the task of inclusion. We have begun to talk in terms of “marginal” or “peripheral” groups needing an outstretched hand to bring them into the mainstream of the Jewish community. However there is no consistent policy towards outreach. This is because important questions have not been discussed nor assumptions been tested within any framework. Thus even the best of intentions of proponents of outreach are undermined.



Specifically: Is outreach good for the Jewish community? Will the effects of outreach programs embrace those who can contribute to the health of the community, or at least not detract from it? Can we reach out successfully without adversely affecting our communities' already existing norms? Is outreach possible for all branches of Judaism?

In Orthodoxy, where halakhah (Jewish law) changes only gradually, much press has been given to the “mikarev” movement. Yet outreach is offered only to those who are willing to conform to Orthodox expectations. By definition then, Orthodoxy reaches out only to those Jews willing to live by and accept a very specific value system, and is itself therefore unchanged by them. Many are automatically left out by this selective process. In the Reform and Reconstructionist movements, where Halakhah plays a drastically reduced role in Jewish life and community, outreach programs encompass any community perceived to be in need of a more intense Judaic involvement. Thus, by definition, outreach to any community brought into the Jewish sphere is beneficial to and healthy for the larger community.

The question of outreach in the Conservative movement is much more complicated. In the Conservative movement halakhically based yet committed to change using a Halakhic process, we see a wide range of attitudes and behaviors depending on the level of acceptance of alternate lifestyles. Many question the advisability of doing outreach. Most forms of outreach bring into question existing attitudes permeating our synagogues and organizations. Sometimes, the groups to whom we reach out represent a threat to the integrity of current Jewish practice.

Over the next three months I will be exploring outreach efforts and issues in various communities. I welcome your input and questions – as together we explore this most important issue facing us today.

Please accept my best wishes for a happy and healthy secular New Year.

Steven Bayar



MUSICAL NOTES

By Cantor Lorna Wallach

Shabbat Shirah, the Shabbat on which the Biblical “Song of the Sea,” or in Hebrew – Shirat Hayam – is read in Parashat Beshallah, and in the Haftarah on that same Shabbat, the Song of Deborah is chanted, occurs this year on January 31 (which happens to be Sisterhood Shabbat!). These special Biblical songs prompt us to think about the importance of music in relation to prayer. I’ve heard many people comment that it is often the melodies of the prayers or singing together as a community which uplifts them, inspires them, or strengthens their connection to God and to their Jewish heritage.



What is *Shir* (a song)? Rabbi Sampson Raphael Hirsch defines it as “an inspired or rapturous expression of what some external event has revealed to the inner self, that which the physical eye cannot see, but what has become clear to the mind’s eye. What is the importance of song in Jewish tradition? In addition to Moses, Miriam and Deborah, King David sang and wrote many of the Psalms, and the Levites of the Temple sang and played instruments to accompany the daily and holiday sacrifices.

Several Psalms begin with the words, “*Mizmor Shir*.” I hope I am not spoiling the surprise by letting you know that if you attend Men’s Club Shabbat services (Jan. 23-24), you will hear a special rendition of Psalm 30 which opens with the words, “*Mizmor Shir*.” The following is a beautiful *drash* on Psalm 30 from Rav Kook, who asks the following question: What is the difference between *mizmor* (melody) and *shir* (song)? Heartfelt emotion, emanating from the depths of the soul, lies hidden in the crevices of life. When these feelings burst forth, we do not immediately render them into words and speech. Without thinking, we may find ourselves humming a lively tune. We give voice to our emotions through *zemer*, in the notes of a melody or wordless tune. This is *mizmor*, the musical outpouring of the soul.

As our feelings expand and reveal themselves, they engage the world of reflection and thought, gaining access to the treasures of language and speech. This is the level of *shir*, of song and poetry. We can now articulate this outburst of emotion using our cognitive faculties of reason and language. When we join *mizmor* and *shir* together, we link our emotional and intellectual sides. First appears *mizmor*, a musical outpouring of the soul’s emotional depths. This is joined by *shir*, poetic expression from holy meditation and thought.

As we pray, we need to aspire to the sublime ideal of *mizmor* and *shir* together. We should fully utilize both our emotional and intellectual capacities for praise and joy.

Lorna Wallach



To contact Cantor Wallach,
email her at cbicantor@cbi-nj.org

In The Community

Refuah Shleima to:

Irving Alper, Mort Gershman, Gloria Segel, and Sharon Sloan.

Condolences to:

Bonnie Wofsy on the passing of her beloved sister, Mona Weiss.

Mi Sheberach

One of the least known liturgical functions of a congregation involves the “Mi Shebarach:” the prayer asking God to heal those who are ill. Congregation B’nai Israel has a “Mi Shebarach” list that is read at services on Monday, Thursday and Shabbat mornings.

We ask members of the congregation to inform us of those they would like placed on the list. If there is anyone you feel would benefit from these weekly prayers, please contact Rabbi Bayar by phone (973-379-3811) or email (cbirabbi@cbi-nj.org) with the name.

If you would like to have a tribute card sent to any of the families listed above in memoriam or in honor of a life cycle event, you may make donations online at: www.cbi-nj.org or contact the synagogue office at 973-379-3811.

DECEMBER 2014 BOT MOTIONS

A MOTION was made and seconded to accept the proposed Israel trip stipend policy. MOTION passed.

President's Message

By Andrea Hirschfeld, CBI President

I hope everyone had a wonderful holiday season with family and friends and I want to start by wishing you all a happy, healthy 2015! I also want to welcome you to 2015 at B'nai Israel! This year, and this month, our calendar is full of wonderful services and events. Every Shabbat has something for everyone — our Men's Club and Sisterhood Shabbats are back to back this month, preceded by our newer Shir Shabbat, College Reunion Shabbat Dinner for those students in town, and an early Shabbat service which often attracts our very youngest, 4-8 year old, members! Please check the calendar for all these dates. And as you do, you will also see the many events we have going on this month — starting with our Party Showcase, followed by Martin Luther King Mitzvah Day, and the many Sisterhood, Men's Club and Adult Learning and lay-led opportunities. We could not do any of these services or programs without all your volunteer participation and leadership! Thank you!

We are excited to be welcoming Rabbi Brad Hirschfeld on February 8th to speak to us as the second in our L'dor V'dor Speaker Series this year. Listed for many years in *Newsweek* as one



of America's "50 Most Influential Rabbis," and recognized as one of our nation's leading "Preachers & Teachers," Hirschfeld offers a unique perspective on the American spiritual landscape and political and social trends to audiences nationwide. We invite you all to brunch before his talk and hope that you will take advantage of the Sunday morning timing to join us!

Finally, in January we will be having the second meeting of our very exciting Sulam for Emerging Leaders program. The group of 15 dedicated, dynamic learners will meet 6 times throughout the year following a curriculum developed by United Synagogue and facilitated by Rabbi Bayar and myself. The focus of the curriculum is to encourage involvement of new leaders through text study and relationship building. We are looking forward to celebrating with the group when they complete the program in May. Please watch for follow up postings on facebook as they progress.

As always — if you have time to volunteer, want to be more involved or just like to share your thoughts, please contact me by email at cbiandrea@gmail.com or cell phone 312-497-0936.

Warm regards,

Andrea Hirschfeld

Publicity Guidelines

If you would like a copy of CBI's new Publicity Guidelines, please contact Ana Amorim, Membership and Communications Coordinator at anaa@cbi-nj.org.



To contact Andrea Hirschfeld, email her at cbiandrea@gmail.com or by phone at 973-738-4636



CBI Chanting Circle

Come to the Chapel **Sunday, January 11th, at 5PM** for our inspirational Hebrew chant and song circle with musical accompaniment.

Our theme is 'Some Enchanted Evening' as we explore the Ma'ariv service in a new way, through the uplifting power of chant.

Be prepared to sing your heart open, soothe your mind, and let your spirit soar! No prior knowledge of Hebrew necessary . . . only a willingness to join in spiritual community.

BAR MITZVAH



Theo Goldman January 17

Theo Goldman is a Congregation B'nai Israel old timer. He graduated from the HGECC nursery school (class of 2007) where his love of math began with much time spent building blocks in Phyllis Zia's wonderful classroom. She always referred to him as her architect. In addition to being thrilled by numbers, Theo also loves playing baseball, fishing on Shelter Island, collecting coins and last but certainly not least eating sushi. Theo is very excited about his upcoming Bar Mitzvah and recently hosted a wonderful baseball clinic mitzvah project that raised money for Saint Barnabas' Clown Care program, which sends clowns from the Big Apple Circus onto the pediatric floor to raise the spirits of sick children.



Come to CBI's monthly **SHIR SHABBAT SERVICE** 6:45 p.m.

Welcome Shabbat with this earlier, partially lay-led service,
featuring communal singing as much as possible.
(Shir Shabbat is Hebrew for Shabbat Song!)

January 9th
February 6th
March 6th
April 17th
May 8th

Shir Shabbat will be a complete Friday night service...
...with tunes synced with prayers learned in Blanche
Bayar Religious School and Golda Och Academy.

We hope that families -- youth and adults of all ages -- will
take an active part in helping lead.

Come to this service to experience it yourself...and help us
develop **Shir Shabbat** into what you want it to be!

For more information or if you have any questions, please contact:
Clergy Office at clergyoffice@cbi-nj.org
or Alex Marcus, Co-Chair, Religious Affairs Committee at amarcus@mac.com.

BLANCHE BAYAR RELIGIOUS SCHOOL NEWS

By Rabbi Helene Kornsgold, Director of Congregational Learning

Happy New Year and welcome back!! When classes ended in December we had just finished studying about Chanukah. Now that school has resumed it is already time to begin learning about the next holiday, *Tu B'Shevat*.

Question: What is *Tu B'Shevat* and Why do we celebrate it? **Answer:** Beginning at sunset on February 3, 2015 we will celebrate *Tu B'Shevat*, the 15th day of the month of *Shevat*. *Tu B'Shevat* (Hebrew: ט"ו בשבט) is considered a minor Jewish holiday. It is also called "The New Year of the Trees" or (Hebrew: לאילנות ראש השנה, Rosh HaShanah La'ilanot). *Tu B'Shevat* is one of four "New Years" mentioned in the Mishnah. It is interesting to think about the reason we would celebrate a day whose original purpose was to calculate the age of trees for tithing. In today's terms it would be similar to celebrating April 15th, a day which is not your typical festive occasion. In the book of *VaYikra*, Leviticus 19:23-25, it states that no fruit may be taken from a tree during its first three years of life. Fruit from the fourth year was given to God as a burnt offering, and in the fifth year the fruit could be eaten. Trees aged one year on *Tu B'Shevat*. Therefore, in many ways *Tu B'Shevat* is the birthday of the trees. So how did a tax day become a minor festive holiday? Throughout history the observance of *Tu B'Shevat* changed several times. Below is an overview of these changes.

In the year 70 CE, when the Romans destroyed the Temple in Jerusalem, the system of tithes was also destroyed. The first modification to the observance of *Tu B'Shevat* was to make it a time of the year when Jews in Exile from the Land of Israel would eat from the seven species of grain and fruit,

biblically associated with the Land of Israel: wheat, barley, grapes, figs, pomegranates, olives, and dates. This tradition kept alive the Jewish attachment to the physical land in Israel. Also, it is considered a *mitzvah* to eat these fruits during *Tu B'Shevat* and recite the appropriate blessings.

In the Sixteenth Century, the Kabbalists reinterpreted *Tu B'Shevat* as a holiday of *tikkun olam* (repairing the world) and expiation for the first sin, eating the fruit of the Tree of Knowledge. By eating fruits, nuts and drinking four cups of wine while reading biblical passages during a *Tu B'Shevat* Seder, the belief was that the Tree of Life (*Etz Chayim*) the divine source of blessing and goodness, would be strengthened.

In the Twentieth Century, modern Zionists appropriated *Tu B'Shevat* as a day to celebrate the flourishing of the State of Israel. One specific way of doing this is to plant trees through donations to the Jewish National Fund (JNF). Over time *Tu B'Shevat* has taken on the qualities of a Jewish Arbor Day. More recently, Jews, especially here in America, associate *Tu B'Shevat* with the modern environmental movement.

To learn more about *Tu B'Shevat*, play games, learn songs and more, check out these websites:

www.akhlah.org, www.myjewishlearning.com,
<http://www.youtube.com/watch?v=7O7Uog6BqDk>, and
<http://www.youtube.com/watch?v=hRfV7XrGfBo>

Helene Kornsgold

You are the heart of Federation.



1,152 individuals attended 267 hours of career seminars/workshops and support groups; 500 people benefitted from individual counseling and job placement services with 137 job placements reported by Jewish Vocational Service.

Put your  into it. Give. Volunteer. Change Lives. Feel Great.

CALL: (973) 929-3198 EMAIL: drc@jfedgmw.org ONLINE: www.jfedgmw.org/donate



Jewish Federation®
OF GREATER METROWEST NJ

HEDWIG GRUENEWALD EARLY CHILDHOOD CENTER

By Rochelle Baron, Director

Happy 2015 to everyone!

We are back from our winter break and it's good to be together again.

Our January plans include parent teacher conferences, welcoming our Twos and their families to the Shabbat program in the sanctuary on Friday mornings and enjoying our rishonim friends, Lital and Hadar. We will be hosting an Open House for prospective families on Wednesday, January 14 from 9:30 am to 11:00 am. Please pass the word on to any neighbors or friends who might be looking for a warm, loving preschool for their child. We'd be happy to show them around our facility and familiarize them with our programs. On January 16 the entire HGECC staff



will undergo recertification in CPR—good to know but something we hope to never use!

HGECC is excited to partake in CBI's Mitzvah Day on January 19. Our project this year will be making recycling containers to be used at home. We hope you will stop by and make your own creation!

Registration for Summer Camp 2015 as well as Fall 2015/Spring 2016 is currently underway. If you would like an application or more information about our offerings please contact me.

Stay warm!



To contact Rochelle Baron,
email her at HGECC@cbi-nj.org

Rochelle Baron

A Warm, Caring and Nurturing Pre-School in your backyard

Register Now
Fall / Spring
Toddler to Pre-K
Summer Camp



OPEN TO THE COMMUNITY
at 160 MILLBURN AVE, MILLBURN



Rochelle A. Baron, Director

Call Now
(973) 379-4040
www.cbi-nj.org



OPEN HOUSE – January 14, 2015 – 9:30am – 11:00am

Come learn about ...

- **Toddler to Pre-K Classes**
- **Enrichment and After-School Programs**
- **Summer Camp**
- **"Together Time" and Transitional 2s**

Helping children become kind and caring people

MEN'S CLUB MINUTE

By Dan Richter, Men's Club President

MEN'S CLUB MINUTE

After a grand time at the Annual Chanukah/ Man of the Year Party, the Men's Club is moving ahead with more fun stuff!

Last month, in this space, I might have mentioned something about the Game of Thrones book. I can't recall for sure, and I was going to fact check, but I seemed to have misplaced my paper copy of the bulletin. So in case you didn't get the message...."Cholent is coming!" And now hear this,

There will be a tournament to determine the greatest cholent in the land (land of Millburn, Maplewood, Springfield, and other nearby towns).

On Wednesday night, January 21st at 7:30 pm, those Men's Club Members who are worthy (have paid their dues) and who wish to take the challenge to cook up the greatest cholent in the land should arise and assemble in the CBI kitchen with the following:

- a new (in the box) vessel to cook the cholent which can be a brand new plug-in Crock Pot (market value of approximately \$30) or an Oval Foil Roast Pan 18" x 14" x 3" 5 (5 pack for \$7.49) which can bake in our CBI oven.
- All Kosher fleishik or parve ingredients to make a cholent for 12-15. Cholents will be served in small sample cups, so will likely be served to 50 or more attendees.
- a recipe either on-paper, on-line, or in-head
- Smiles

Chefs will have from 7:30 pm until 9:30 pm to prepare their cholents. Those who are able to, can also take a 20 minute break for minyan. If you need past 9:30 pm, that's fine, but those sticking around as Moshgiach of the kitchen might start getting hungry by then, and they might start eating the raw ingredients.

Cholents will cook overnight Wednesday, and will be put in refrigerators until Saturday morning. On Saturday morning, they will be warmed up in Shabbat ovens until the Kiddush at approximately 12:30.

Cholents will be brought out with no indication of the connection to the chef, but will be issued a number or letter. Attendees will vote for their favorite dish in a manner consistent with the rules of Shabbat. The winning cholent will be served in the new Kiddush Cup trophy

won by Men's Club Bowlers back on that glorious Sunday night November 23rd! The winning chef will be identified, congratulated, and will be given a free year's membership to the Men's Club!

There is no cost to participate other than your cooking vessel. Please bring your food purchase receipts for reimbursement by the Men's Club.

You can sign-up in one of 2 ways by January 15, 2015.

1. Email cbimensclubmillburn@gmail.com and write your name, phone number, and something like "I will cook cholent!"
2. Call me or leave me a voice mail saying your name, your phone number, your email, mention that you would like to cook cholent on at 732-261-5138.

So come on out to the Men's Club Shabbat Friday night January 23rd and Saturday January 24th. This is a special time for the CBI community to come together to do the mitzvot of the services and honoring the Shabbat in a festive manner. And there will be cholent!

AHEAD ON THE CALENDAR

- Monday January 19th - MLK Day - Mitzvathon 2-4 pm!
- Wednesday January 21st Cholent cooking!
- Friday and Saturday January 23/24 Men's Club Shabbat
- Thursday February 12th 8:20 pm (following Minyan) - 9:30 pm. Texas Hold 'Em Tournament.

I will leave you with this, in case you do not have a cholent recipe handy.

INGREDIENTS

5 onions, quartered
6 tablespoons vegetable oil
6 pounds chuck roast, cut into large chunks
1 1/2 cup dry kidney beans
1 1/2 cup dried pinto beans
1 1/2 cup pearl barley
8 large potatoes, peeled and cut into thirds
boiling water to cover
3 (1 ounce) packages dry onion and mushroom soup mix
3 tablespoons garlic powder
salt and pepper to taste

PREP

40 mins

COOK

10 hrs

DIRECTIONS

In a large oven safe pot or roasting pan, sauté onions in oil over medium heat.

Add meat, and brown well on all sides.

Mix in beans; stir continuously until the beans start to shrivel. Stir in the barley. Add potatoes, and add just enough boiling water to cover the meat and potatoes. Mix in dry soup mix and garlic. Season with salt and pepper. Bring to a boil, lower heat, and simmer partially covered for 20 minutes on stove top.

Preheat oven to 200 degrees F (95 degrees C).

Cover pot tightly, and place in preheated oven. Allow to cook overnight for at least 10 to 15 hours. Check periodically to make sure you have enough liquid to cover; add small amounts of water if needed. Do not stir; stirring will break up the chunks of potatoes.

Makes 12 to 15 servings Change Servings

Source: From <http://allrecipes.com/recipe/moms-authentic-kosher-cholent-recipe/>

Dan Richter
Men's Club President



To contact Dan Richter, email him at cbimensclubmillburn@gmail.com or call him at (732) 261-5138

Save the Date
January 9, 2015

College Reunion Shabbat Dinner

**For families with college
age children.**

**Watch for more information in
upcoming announcements.**

**You can also check our
website www.cbi-nj.org**



CBI MEN'S CLUB SHABBAT DINNER & SERVICE

FRIDAY, January 23, 2015

Dinner at 6:45PM / Service at 7:45PM

Join your CBI friends for a communal Shabbat dinner prepared by the renowned Men's Club chefs before Kabbalat Shabbat service!

Adults and children of all ages are welcome!
Shabbat Singing and Good Times.



Early Bird Cost: \$5 per person / \$25 per family max RSVP by Jan 15th

(\$10 per person / \$40 per family max after Jan 20th)

~~~~~

**WE HOPE YOU CAN JOIN US!! RSVP ABSOLUTELY BY Wednesday January 21st  
...LIMITED SPACE!**

**RSVP to Dan Richter: [cbimensclubmillburn@gmail.com](mailto:cbimensclubmillburn@gmail.com) / (732) 261-5138.**

Please send your check to the CBI 160 Millburn Av, Millburn NJ 07041 Attn.: Men's Club Shabbat.

Make check out to "CBI Men's Club" with memo "Shabbat Dinner".

Adult Names \_\_\_\_\_

Kids Under 18 Names and Ages \_\_\_\_\_

Total # of people \_\_\_\_\_ Total owed \_\_\_\_\_

Notes \_\_\_\_\_

## CBI Adult Learning

presents

### Israel through the Lens of Modern Cinema

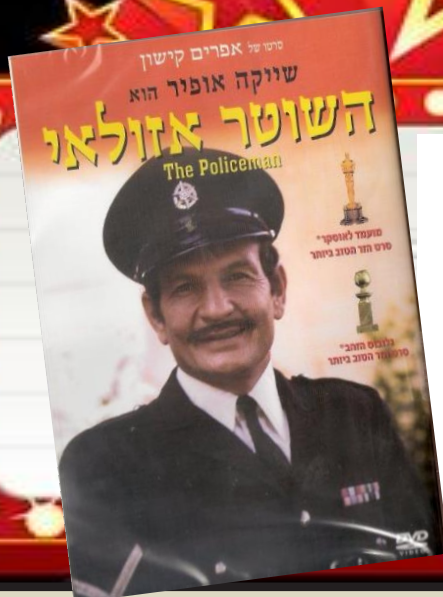
*A Series of Critically Acclaimed Films by Israeli Directors!*



CONGREGATION  
B'NAI ISRAEL

**\$5.00**

per person  
payable at door



**FIRST FILM OF YEAR!**

## **The Policeman**

**Sunday, January 11**

**7:00 p.m.**

Congregation B'nai Israel

*Snacks & Discussion to Follow*

A comedy directed by Ephraim Kishon, released in 1971 and known in Israel as *Hashoter Azulai*. Avram Azulai is a policeman in Jaffa, whose incompetence is only matched by his soft-heartedness. His superiors want to send him to early retirement, but he would like to stay on the force, and the criminals of Jaffa don't want to see him leave either! On the eve of his retirement, frustrated beat cop Azoulay (Shaike Ophir) encounters religious zealots, comes to the aid of a prostitute, and unwittingly solves a crime staged for his benefit. This satirical film about the misadventures of an aging Tel Aviv policeman shows Kishon once again confronting social dilemmas from the perspective of a good-hearted, beleaguered Israeli Everyman. This is mainly a comedy due to Azulai's antics but it's not all laughs. This was the first Israeli movie to be nominated for the Academy Award for Best Foreign Language Film; it did win a Golden Globe as Best Foreign Language Film.

# ISRAEL AFFAIRS

By Joe Tenenbaum



## CURRENT EVENTS

While monthly reporting on current events cannot compete with the immediacy of other news outlets, I would like to mention a couple of items concerning Israel to help our community stay up to date on the major events likely to affect Israel in the next several months:

### Ongoing negotiations with Iran:

Last month I reported about the negotiations with Iran. The November 24th deadline passed and negotiations are set to continue for another 7 months. Many analysts believe that the current situation is better than no negotiations, but others point to cheating by Iran to indicate that the current situation is not under control. In early 2015, you should watch to see if the US Congress attempts to put in place additional sanctions which would go into effect if the negotiations do not meet the requirements of a "good deal."

### Israel has scheduled an election

Israel has a parliamentary style of government which depends on a coalition of parties to create a governing coalition – with a majority of the 120 members of the Knesset. Following last summer's war with Gaza, and with increasing Palestinian incitement and anti-Jewish violence in Jerusalem and the territories, the current government has dissolved. New elections have been set for March 17, 2015. I do not believe there is a clear favorite in this election. Because the various parties are creating new alliances, the elections may end with a different Prime Minister.

Additional interest in the elections comes from the known preference from the US administration for a Prime Minister more aligned with the US strategy for negotiating peace.

For more information on these and other news items, I recommend the following websites.

<http://www.timesofisrael.com>

A Israeli on-line newspaper

<http://www.dailyalert.org>

A daily news digest about Israel and the Middle East

## Consider attending the AIPAC Policy Conference in 2015 March 1-3

I have written a great deal encouraging members of the CBI community to attend the 2015 AIPAC Policy Conference in Washington DC at the beginning of March.

I will not repeat my descriptions of the activities, the speakers and the importance of our participation in this program.

If you think you, or your family would like to register to attend, please visit <http://www.aipac.org/act/attend-events/policy-conference>.

If you have questions about the conference, please speak to me, either in person, or contact me by e-mail at the address shown below.



## CBI and the Rishonim

Ligal Peretz is one of the Metrowest Rishonim who is working in the HGECC this year. The purpose of bringing these young Israelis to our schools is to help build relationships between our children, and young adults from Israel. Ligal provided a biography of herself when she joined the program.

*My name is Ligal Peretz, and I am 18 years old. I have 2 brothers and one sister; my older brother is 19 years old, in the army, and my younger sister and brother are 15 and 14 years old. My father works as comptroller at Dead Sea's hotels and my mother is an administrative manager at a pre-military academy in Arad.*

*I have been dancing since I can remember in every style of dance. I like to spend time with friends and family whenever I can, since I am very social. I love working with children and I mentored a student in the eighth grade, who has become like my little sister. I love reading books, especially by Danielle Steel and Harlan Coben.*

*This shlichut is important to me because I want to bring Israel to American Jews. I want them to understand that we are here for them; we support them and love them even if they are far away. I want them to see me as a representative of Israel, so they will feel more connected. In addition, I want to strengthen the connection between American Jewish youth and Israel and Israeli youth, and continue to nurture and develop the bridge I built during years of participation in living bridge projects between Arad and our American partnerships.*



## CBI – Israel through the Lens of Modern Cinema

Again this year, CBI is sharing movies by Israeli directors with the community. Each program is scheduled for Sunday night at 7 p.m., includes light refreshments, showing of the film, and a brief discussion afterward. The next movie night is January 11 and the movie that night will be *Ha Shoter* (The Policeman). The movie is about a policeman who is a member of an anti-terrorist group. One of the actors is Yiftach Klein who also appeared in a film we showed last year, *Fill the Void*. Please make a note of these dates and plan to attend.

## Congratulations and Kol Ha Kavod !!

Congratulations to Art Fredman and to Roslyn and Henry Brendzel for their participation in the Sar El program, supporting the IDF on behalf of all of us. Art has written an article which describes their activities elsewhere in this Bulletin.

## A New Program and a Potential New Program

The CBI Board has approved a program which will provide a stipend to students active in CBI high school

or youth programs to help toward a teen trip to Israel. A certificate for the program will be presented at each Bar and Bat Mitzvah ceremony. The program is aimed at strengthening the connection of our young adults with Israel, and helping them visit.

I am working with Rabbi Bayar to help start a Shabbat Israel discussion group. If you are interested in becoming a part of this program, let me know.

## Missing Soldiers and Soldiers on Duty

We must continue to pray for the remaining soldiers to return home:

|                       |                    |                    |
|-----------------------|--------------------|--------------------|
| <b>Majdy Halabi</b>   | <b>Guy Hever</b>   | <b>Ron Arad</b>    |
| <b>Zachary Baumel</b> | <b>Avi Feldman</b> | <b>Yehuda Katz</b> |

Please also pray for **Jonathan Pollard**, (Yehonaton ha Levi ben Malka) who has been imprisoned now for over 28 years and is in need of healing.

Joe Tenenbaum



To contact Joe Tenenbaum, email him at  
TenenbaumJ@AOL.com

## January 2015 Yahrzeit Donors

|                        |                 |                       |
|------------------------|-----------------|-----------------------|
| Ronnie Armuth          | Marvin Fish     | Susan Margulies       |
| William Berg           | Sarah Franzblau | Erika Maurer          |
| Deena Bernhaut         | Marion Freedman | Lenore May            |
| Henry Bloom            | Leo Friedland   | Murray Mohl           |
| Irwin & Judith Buncher | Ellen Garber    | Ruth Morvay           |
| Molly Burack           | Carrie Gottlieb | Jeryl & Ken Rempell   |
| Judy & Gary Dubro      | Gloria Gottlieb | Sondra Sabin          |
| Shirley Ehrich         | Barbara Ismail  | Risa & Evan Wasserman |
| Ellen Eichler          | Hanna Keselman  | Neil Yaris            |
| William Fern           | Richard Maslow  |                       |

## Israel Teen Travel Stipend



Congregation B'nai Israel is excited to announce a new *Mazel Tov* "gift" in honor of each B'nai Mitzvah!

In keeping with this synagogue's commitment to Israel, in recognition of the importance of this important life cycle event and to encourage meaningful post-B'nai Mitzvah Jewish engagement, Congregation B'nai Israel will award each child who becomes a Bar/Bat Mitzvah at CBI a \$250 stipend certificate redeemable for a teen trip to Israel during 9th-12th grade.

This stipend is good for future travel to Israel on a teen tour, including children currently in high school who have become a Bar/Bat Mitzvah at CBI.

The certificate – redeemable once – is valid towards a teen trip to Israel of any duration at any time of year with a recognized Jewish organization, such as USY, Ramah, GOA, Diller or other approved program. In some cases, other organizations (such as Jewish Federation of Greater MetroWest) offer matching scholarships.

The teen must be enrolled in CBI Chapter of USY and/or BBRS Tichon program and/or other approved post-B'nai Mitzvah program, and have an active level of participation in the year trip is taken or immediate subsequent year.

The Israel Teen Travel Stipend Committee will oversee program; this committee consists of one representative from each of the following existing CBI committees: the Youth Committee, Israel Affairs, and the Finance Committee.

Complete guidelines and application form are available through the synagogue office.



### Legacy Circle

Is CBI already in your estate plan?

We need to know so we can honor you as part of our **Legacy Circle**.

Would you like to participate in the Legacy Circle and provide for a vibrant future at CBI?

We would like to hear from you!

Do you have any questions about ways to create your legacy here at CBI?

We are here to answer any questions and address any concerns.

Please contact [legacycircle@cbi-nj.org](mailto:legacycircle@cbi-nj.org)



**Congregation B'nai Israel's  
COMMUNITY-WIDE  
ANNUAL MLK MITZVAH DAY**

*Monday, January 19th - 2pm - 4pm*

**MARTIN LUTHER KING, JR. DAY**  
*"Make it a day on, not off!"*



*Mitzvah Day is an opportunity to learn about and  
support various organizations in our community and Israel.  
It is open to all congregants and the local community.  
It will be held at Congregation B'nai Israel - 160 Millburn Avenue in Millburn.*

*Over 20 Charitable Groups and Organizations  
Local - State - National - Israel*

***PLUS! Special Performance by  
Columbia High School's Special Dance Group***

*Visit [www.cbi-nj.org](http://www.cbi-nj.org) for details on all  
participating groups and collection items!*

*Please be aware that there is  
NO pre-registration or entrance fee.  
Some tables may ask for nominal donations.*

*Organized by  
Hearts and Hands Committee and CBI Programming*

*For more information, please contact  
Lori Katzman @ [lakatzman@me.com](mailto:lakatzman@me.com) or call 973-379-3811*

## PARTICIPATING GROUPS

|                                                                                     |                                                                                                                                                                                                                                                                                                                                                                                                          |
|-------------------------------------------------------------------------------------|----------------------------------------------------------------------------------------------------------------------------------------------------------------------------------------------------------------------------------------------------------------------------------------------------------------------------------------------------------------------------------------------------------|
| <b>Moms Helping Moms Foundation</b><br>(Bridget Cutler)                             | Meet local mother from New Providence, who was named a <b>2014 CNN Hero</b> for helping local families with children (birth to age 3) access essential supplies. See the donation list on last page ( <b>diapers, NEW baby wipes, bottles and sippy cups</b> ). Learn about how you can get involved with this organization.                                                                             |
| <b>Rent Party Pantry, Inc.</b><br>(David Wagner)                                    | Help fight hunger in Maplewood/South Orange by helping children in need of weekend food. <b>Donate individual servings of meals by Healthy Choice or Hormel Compleats.</b> Decorate and write a note of support on labels that will be placed on the donated food.                                                                                                                                       |
| <b>bookBgone</b><br>(Lois Cantwell)                                                 | Contribute <b>BOOKS, DVDs and CDs</b> for children and adults. Help sort them for distribution. <b>LARGE PRINT BOOKS</b> are especially needed. Assist in bringing items to the Morris Ave., Union office.                                                                                                                                                                                               |
| <b>bookBgone Friends</b><br>(Lenette and Andrew Talpins)                            | Come decorate and personalize <b>BOOK MARKS</b> to go with the donated books that will be distributed to children and adults by the Talpins family and bookBgone.                                                                                                                                                                                                                                        |
| <b>Friends of the Israel Defense Forces</b><br>(Rayna and Hallie Katzman)           | <b>FIDF SWAG RAFFLE!</b> 2 FIDF t-shirts and a hat will be raffled off - there will be 3 lucky winners! Also, <b>craft your own note</b> to show your support of the Israeli soldiers for protecting the Israel! All donations will be benefit Israeli soldiers through FIDF programs.                                                                                                                   |
| <b>Project Linus</b><br>(Sisterhood's Knit and Knosh Group)                         | Become a "blanketeer!" Project Linus accepts new, handmade, washable blankets to be given to seriously ill and traumatized children, ages 0-18. Sisterhood is accepting donations of <b>YARN</b> or money to purchase yarn. Yarn must be <b>NEW</b> acrylic, worsted and washable. Do you knit? <b>Make a 12" x 12" square to join with others and/or a 36" x 48" blanket knitted on size 8 needles!</b> |
| <b>Interfaith Hospitality Network</b><br>(Ferdinand, Alpert & Troll Families)       | CBI is part of IHN's Emergency Network Program, responsible for housing, hosting and feeding up to 14 guests. Learn how to get more involved. Donate <b>NEW SOCKS</b> to be entered in a <b>RAFFLE</b> (Target gift card). Make tissue paper flowers to decorate the rooms!                                                                                                                              |
| <b>Down the Block</b><br>(Wendy Minocha)                                            | Down the Block is all about "Neighbors helping Neighbors." Stop by our table and help us get out our message by contributing to our <b>"Helping Hands Tree" craft</b> – cut out an outline of your hand and glue it to our colorful tree.                                                                                                                                                                |
| <b>Friends of NJ SEEDS</b><br>(Erika Fanelle)                                       | Help change the lives of high-achieving students from low income families. Donate your gently used, clean <b>PROM DRESSES</b> (prefer it is delivered in cleaner bag). Write an encouraging note for these hardworking students as they prepare for their upcoming exams.                                                                                                                                |
| <b>Cora Hartshorn Arboretum</b><br>(Sara Ramos)                                     | Learn how to help <b>PROTECT THREATENED/ENDANGERED SPECIES</b> and their habitats. Visitors will have an opportunity to see 3 animals up-close, learn about each animal and have the opportunity to touch at least one of the animals.                                                                                                                                                                   |
| <b>Meals for the Homeless</b><br>(Men's Club of CBI and MMS Girl Scout Troop 20491) | Join us to make sandwiches and assemble <b>OVER 150 BAGGED MEALS</b> for individuals in need. Write a note to be included on our <b>positive affirmation board</b> to be donated with the meals.                                                                                                                                                                                                         |
| <b>Sharsheret</b><br>(Dybner Family)                                                | Come find out what Sharsheret means! This national organization supports young women and their families facing breast cancer. Stop by to learn more and to <b>make a pink and white beaded BRACELET to promote breast cancer awareness.</b>                                                                                                                                                              |



## ***PARTICIPATING GROUPS***

|                                                                                             |                                                                                                                                                                                                                                                                         |
|---------------------------------------------------------------------------------------------|-------------------------------------------------------------------------------------------------------------------------------------------------------------------------------------------------------------------------------------------------------------------------|
| <b>Junior League of the Oranges and Short Hills</b><br>(Kim Walls and Sheila McClure)       | JLOSH is dedicated to improving communities and helping children in need. Come by and help JLOSH volunteers create little supply bags filled with basic needs for school children in Orange.                                                                            |
| <b>Bears from Bergenfield</b><br>(Naneen Levine)                                            | Collecting NEW/GENTLY USED, huggable, small to medium sized <b>STUFFED ANIMALS</b> to be sent to traumatized children in Israel. Also, collecting <b>DUFFLE BAGS</b> to transport the loveys to Israel.                                                                 |
| <b>Achieve Foundation</b><br>(Amy Forman)                                                   | Learn about the Achieve Volunteer Tutor program, which seeks to improve the academic performance of children at academic risk - help close the "academic achievement gap" in one hour a week!                                                                           |
| <b>Recycling</b> (Rochelle Baron - Hedwig Gruenewald Early Childhood Center)                | <b>REDUCE! REUSE! RECYCLE!</b> Help save the planet and reduce your carbon footprint! Make your own recycling bin to take home with you and learn what can and cannot be recycled!                                                                                      |
| <b>Senior Housing at Daughters of Israel</b> (Sisterhood of CBI)                            | Join us to make and <b>decorate placemats</b> to provide to seniors living at Daughters of Israel in West Orange.                                                                                                                                                       |
| <b>Soles4Souls</b><br>(Masia Warner Family)                                                 | Soles4Souls is dedicated to fighting the impact and perpetuation of poverty by collecting NEW and gently used <b>SHOES</b> to benefit those in need. Please tie laces or bag pairs of shoes together.                                                                   |
| <b>Scavenger Hunt</b><br>(Blanche Bayar Religious School - Rabbi Kornsgold)                 | Participate in Rabbi Kornsgold's Scavenger Hunt. Visit at least 18 of the tables - <b>participate, donate, learn a fact</b> - record it all on the provided sheet and meet up with Rabbi Kornsgold to show her what you learned...there will be a surprise when you do. |
| <b>The Uplift Project</b> (Michelle Hubertus and Hadassah Teens)                            | <b>SUPPORT BREAST CANCER</b> , raise awareness and empower women to take control of their health. Participants can decorate bras and have the opportunity to display creations on Pinterest.                                                                            |
| <b>Jewish National Fund</b><br>(Anna Richlin)                                               | Do you know Israel Trivia? Participate and win a prize! Take a picture with our very own <b>JNF's Blue Bob Box</b> and learn how JNF has supported Israel for over 100 years and how to get involved.                                                                   |
| <b>Interfaith Hospitality Network</b><br>(Blanche Bayar Religious School - 7th grade class) | As part of their social action program, the 7th graders are raising funds for IHN, an organization that supports individuals and families who are in need. <b>HOMEMADE CHOCOLATE BARS</b> (that the 7th graders made) will be for sale; all proceeds will benefit IHN.  |
| <b>Gift of Life Bone Marrow Foundation</b> (Julia Zelig)                                    | Get your <b>CHEEK SWABBED on MITZVAH DAY!</b> Learn how you can get involved and help facilitate bone marrow transplants.                                                                                                                                               |
| <b>New Jersey Public Interest Research Group</b> (Dan Xie)                                  | NJPIRG is a consumer group that uses grassroots organizing to support the voices of ordinary citizens. They will be educating participants about <b>SOLAR CITIES in NJ</b> - stop by to learn more!                                                                     |
| <b>Chai Lifeline</b><br>(Rochel Mendlowitz)                                                 | Do you want to make a difference in the life of a child? Find out how you can help seriously ill children and their families. Come see our <b>SLIDESHOW</b> presentation.                                                                                               |
| <b>The Lupus Foundation of America</b><br>(Lenny Andruuzzi)                                 | Come learn at this informational table about lupus and the services offered for people suffering from lupus and their families.                                                                                                                                         |

**COLLECTIONS BEGIN JAN. 5th OR  
BRING THEM TO THE EVENT ON JAN. 19TH**

|                                                                                                                        |                                                                                              |                                                        |                                                                                   |
|------------------------------------------------------------------------------------------------------------------------|----------------------------------------------------------------------------------------------|--------------------------------------------------------|-----------------------------------------------------------------------------------|
| prom dresses<br>(please clean<br>before donated)<br><b>(NJ SEEDS)</b>                                                  | skeins of yarn<br>NEW -<br>washable,<br>acrylic and<br>worsted<br><b>(Project<br/>Linus)</b> | NEW socks,<br>any size<br><b>(IHN)</b>                 | NEW baby<br>toiletries - wipes,<br>lotion, wash<br><b>(Moms Helping<br/>Moms)</b> |
| individual<br>servings of meals<br>by Healthy Choice<br>or Hormel<br>Compleats<br><b>(Rent Party<br/>Pantry, Inc.)</b> | stuffed animals<br>NEW or<br>gently used<br><b>(Bears from<br/>Bergenfield)</b>              | shoes<br>NEW or<br>gently used<br><b>(Soles4Souls)</b> | diapers<br>(opened<br>containers ok)<br><b>(Moms Helping<br/>Moms)</b>            |
| DVDs/CDs<br>(all ages)<br>gently used<br><b>(bookBgone)</b>                                                            | books<br>(all ages and<br>LARGE PRINT)<br>gently used<br><b>(bookBgone)</b>                  | duffle bags<br><b>(Bears from<br/>Bergenfield)</b>     | NEW<br>sippy cups,<br>bottles<br><b>(Moms Helping<br/>Moms)</b>                   |

***The Special Dance Company will perform at 2pm.***

*Columbia High School's Special Dance Company is a collection of about 30 teens studying dance through improvisation, history and choreography. Taught by Kandice N. Point-Du-Jour, the students have performed at NJPAC, Rutgers and Two Rivers Theater in Red Bank. A select group of this company will be performing at Congregation B'nai Israel on Martin Luther King, Jr. Day to kick off our afternoon of community service and making it "a day on, not off." It is our pleasure to welcome them to our event. After the performance, dancers will be available to teach some dance moves - everyone is welcome!*

*Thank you to all of the participants and table hosts!*

## SAR EL VOLUNTEERS ASSIST THE IDF

By Art Fredman

Back from yet another incredible Sar El mission.

Just think. This Negev landscape - vast, barren, and despoiled, yet so steeped in history. It was the earth of Abraham, the Tribe of Judah, and the Kingdom of Solomon. Yet, here we stood, surrounded by the remnants of munitions spent in the latest defense of Israel, with that historic earth clinging to the grim leftovers of war. Our job was to sort and separate the items for recycling. Our remote desert outpost was just about the same distance from Gaza as exists between Millburn and New Brunswick.

The Sar El experience is probably the only opportunity for those from outside Israel to feel and taste the inner core of her immeasurable strength - its Defense Forces. Working, eating, and relaxing among her soldiers provides insight into life in the restive Middle East. As Sar El volunteers perform support services on the bases, soldiers are cleared to engage in crucial training. I've been impressed at the numbers of Jews and Christians who have served and left deep footprints through their duty. Since 1982, Sar El volunteers have numbered approximately 150,000 from more than 30 countries, including many who have made aliyah.

Briefly, the Sar El story started as a brainstorm of legendary Paratroop General Ahron Davidi, who retired from IDF in 1974. A tough combat veteran and former Palmach, then Hagganah, fighter in the '40s, he successfully led his troops in many battles during the 1956 campaign and the 1967 Six Day War.

In 1982, Operation Peace for Galilee was launched into Lebanon. As the conflict dragged on, it became evident that there would be insufficient manpower at home to harvest the crops growing in the fertile Jezreel Valley, and elsewhere. Davidi gathered emissaries to visit the United States to recruit volunteers to help with the harvest. About 650 Americans answered the call and salvaged the harvest. In the Spring of 1983, he formally set Sar El into motion.

I'm proud to have signed up and escorted 21 volunteers during my multiple tours of duty. Most have come from the synagogue family.

Among our past duties were refreshing combat medic backpacks, cleaning brake drums of Merkava tanks, checking gas masks going to all Israelis, doing (limited) kitchen work, moving supplies, and, in November 2014, dealing with munitions parts left over from the Gaza Campaign, Protective Edge.

Part of the experience is living in Spartan conditions, savoring the limited, but healthy, variety of foods, and enjoying relationships with youngsters who, if they were Americans of



the same age, would be settling into their dorms and starting halcyon college years. There is much to be learned for the Israeli's intense love and sense of sacrifice for their country, family, and comrades.

At our base, where cloudless days hovered around 85 and nights dropped thirty degrees, we noted a basketball court. It was never used. Why?

No basketballs. We two, plus two soccer balls. There was jubilation among the soldiers. Many games ensued, and we quickly raised morale in that lonely outpost in the desert.

CBI volunteers traditionally sponsor a pizza party on our final evening. From somewhere afar, about ten pies were delivered. It was a joy to watch the young soldiers savoring every delicious bite. For these youngsters, this was a rare treat. Of course, Negev pizza doesn't compare to New Jersey's best!

During the ensuing days of touring, we proudly wore our Sar El caps.

On quite a few occasions, Sar El-nik strangers stopped us and shared experiences. At the Jerusalem Dan Panorama, at least five others engaged us in 'war stories.' A woman from Chicago painted an unforgettable image. She was folding tents and doing other chores at a training base somewhere in Judea. As she slept in a warehouse area, she sensed movement around her. She awoke to see a number of young girls, with their M-16s and full-field packs and camouflaged faces going to sleep on the concrete floor around her cot. They were being sent to patrol near Gaza in the morning and were frightened and couldn't sleep. The Sar El lady made them feel more at ease - absentee mother to these children growing up very fast.

Sar El is an extraordinary Zionist involvement. Contact me if you are interested.

Art Fredman

# CBI Men's Club Shabbat Challah

Enjoy your shabbat meal with delicious challahs from CBI!

**\*FEATURING**  **FAMOUS CHALLAH\***



**We Are  
Nut-FREE**



Challahs are \$5.00 each

Order daily, monthly, weekly, or an entire year at a time!

Options include: Plain, Raisin, Whole Wheat, Chocolate chip, Pull-a-part, and 6-pack of Rolls, and more!!

Orders placed on Monday are available for pickup in the kitchen every Thursday evening through Friday mornings

For faster order processing and pay by credit card please use our online ordering system at [cbi-nj.org/challah-online-order-form](http://cbi-nj.org/challah-online-order-form)



Questions? Please contact Jonathan Schor at [cbimensclubmillburn@gmail.com](mailto:cbimensclubmillburn@gmail.com) or (516) 978-1705

IF you would like to use the order form please tear off form below and return with your check payable to "CBI Men's Club" to the synagogue office, Attn: Men's Club Challah, at 160 Millburn Ave. Millburn, NJ 07041

Name \_\_\_\_\_ Phone # \_\_\_\_\_ Email \_\_\_\_\_

1) Type of Challah \_\_\_\_\_ Number \_\_\_\_\_ Frequency \_\_\_\_\_

2) Type of Challah \_\_\_\_\_ Number \_\_\_\_\_ Frequency \_\_\_\_\_

3) Type of Challah \_\_\_\_\_ Number \_\_\_\_\_ Frequency \_\_\_\_\_

Total @ \$5.00 Each \_\_\_\_\_





#### TENTATIVE SCHEDULE OF EVENTS:

##### Friday:

Josh will lead an *early service for nursery school and young families*, *join in a congregational dinner*, participate in the Kabbalat Shabbat/ Ma'ariv service, and lead us at a musical oneg.

##### Saturday:

Shabbat morning services will feature learning and singing, including a special niggun written by Josh for CBI. Kiddush and songs will follow.

##### Saturday afternoon

Special events exclusively for USY/Kadima.

##### Saturday night

Melave Malka - a post-Shabbat celebration with wine, cheese, and dessert.

Congregants are invited to bring musical instruments and songs to participate in a jam session.

##### Sunday:

Special musical events for the BBRS.

Friday, March  
20-Sunday,  
March 22

## CBI Artist in Residence Weekend



Featuring JOSH WARSHAWSKY. A musician, Jewish educator, and song leader, Josh Warshawsky is currently Musician-in-Residence at Temple Beth Am in Los Angeles. He has been described as a "breakthrough young talent" known for his "soulful singing" and enthusiasm. Warshawsky is an alumni of Camp Ramah in Wisconsin as well as a graduate of List College, the joint program between Columbia University and the Jewish Theological Seminary with BAs in Religion, and Talmud and Rabbinics. Last year he completed his first CD of original melodies for the liturgy, which can be found on iTunes.

The musical weekend with Josh as Artist-in-Residence at CBI promises to be an entertaining and inspiring experience for all members of the congregation.

For more information about Josh, go to <http://joshwarshawsky.wix.com/music>.



**Sisterhood Members FREE!**

## **Open Mah Jongg Night** **Wednesday, January 14, 7:15 pm**

Presenting an opportunity to play your game, or join a new one; refresh your skills, or perfect them! Learner's table available.

RSVP to Amy Dantus. Abdant@gmail.com.  
Members FREE!!! Non-Members: \$5.00

### **Next Deadline**

Please note, the deadline for the February 2015 bulletin is January 10. Information contained in the bulletin each month is time sensitive. We appreciate your cooperation in order to ensure that the Bulletin reaches everyone by the beginning of each month. Space permitting, we will do our best to include your item(s), and we reserve the right to edit your submission. Please submit all material to lisar@cbi-nj.org.

### **Order Your 2015 Mah Jongg Card!** Sisterhood can order your new Mah Jongg card at no extra charge!

\_\_\_\_\_ Standard Card @ \$8      \$ \_\_\_\_\_

\_\_\_\_\_ Large Print Card @ \$9      \$ \_\_\_\_\_

Voluntary Contribution (postage) \$ \_\_\_\_\_

Total: \$ \_\_\_\_\_

Please PRINT your name & address:

Name \_\_\_\_\_

Address \_\_\_\_\_

Make Check Payable to:

Amy Dantus

and mail to:

10 Quaker Road

Short Hills, NJ 07078

The 2015 Card will be mailed directly  
to you in the Spring of 2015.

This is a fund raiser for Sisterhood.

### **How Can I Contribute to Torah Fund?**

**Order Torah Fund Cards ~ \$4 per card or 6 for \$20**

**Call Sandy Panzer at 908-351-1999**

**Make checks payable to:**

**Torah Fund – JTS**

**Please leave order in Sisterhood mailbox located in the synagogue office. We will fill & deliver your order promptly.**

#### **CONDOLENCE**

☐ Dark Blue ☐ Cream ☐ Tree ☐ White

#### **CONGRATULATIONS ON ANY JOYOUS OCCASION**

☐ Baby ☐ Mazel Tov ☐ Rejoicing with You

☐ Milestone ☐ Special Occasion

#### **MISCELLANEOUS**

☐ In Friendship ☐ Todah Rabah (Thank you)

#### **GET WELL**

☐ Refuah Shleimah (Complete Recovery)

☐ Get Well

#### **Purchase Special Gift Cards from the Torah Fund Office.**

Beautiful cards are available for \$18 or \$50 donations. Call the Torah Fund office at 212-678-8977 to order. Or visit them at [www.jtsa.edu/torahfund.xml](http://www.jtsa.edu/torahfund.xml)

**Give a donation!** Make donation payable to Torah Fund-JTS & send to Sandy Panzer, 975 Harding Road Elizabeth NJ 07208.

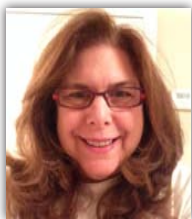
**Become a Benefactor** for \$180 donation and receive a pin. Larger donations receive a pin with a gem in the pin.

**Lois Kleiner and Sandy  
Panzer**  
Torah Fund Vice Presidents

## Sisterhood's Message

By Karen Tucker, Sisterhood President

This year **Sisterhood Shabbat** will be celebrated on Jan 30th and 31st. This is Shabbat Shirah – the Shabbat of Song. We read Parshat Beshalach which is the period after the exodus and is to give thanks to God for the parting of the Red Sea and the Israelites survival and escape to the other side.



The women of CBI play a pivotal role in all aspects of our congregation as well as in the Conservative Movement. Jewish education, religious equality and charity are the cornerstones of our community. This is wonderfully evident as every part of Sisterhood Shabbat is celebrated by both the adults and youth as well. When I say everything I also mean behind the scenes as well as through the service itself. I want to thank Leslie McCafferty for her ability to fill each part and encourage us to try something new and challenging; Cantor Wallach for her tutorials; and of course who can forget the beautifully baked, cooked and served Oneg and Kiddush skillfully orchestrated by Executive Chef Robin Polson, her Sous Chefs Lisa Ehrlich and Renee Kingsberg and the rest of the crew.

For me this weekend will be one of the most memorable parts of my presidency.

The other major event in January is **MLK Mitzvathon** on Monday the 19th. Sisterhood, as always, will participate. This year by making handmade donations of blankets to Project Linus and by crafting placemats for the residents of

both Daughters of Israel and Vose Senior Housing. The Knit and Knosh group has stepped up production and the fruits of their labor can be seen on mitzvathon day. If you would like to join us, knit on your own, donate for the purchase of yarn or donate yarn itself please email Marion Mohl (marionmohl@aol.com) or Ann Spector (annspecter@msn.com) for all the details. I hope to see you all there to support this wonderful day of service.

Just a few reminders:

**Mah Jongg** – Wed. Jan 14th at 7:30 come learn- come play!

**Rosh Chodesh** – Wed. Jan. 21st at 6:15 dinner and program more info. to follow

**Knit & Knosh** – Tues. Jan. 27th at 7:30 hone your skills, learn a new one- or work on your own project!

**SAVE THE DATE: Women's Seder!** Sunday Evening March 15th. Led by Cantor Wallach - more info to follow

For the particulars on any of these programs- or for information about the gift shop please see the flyers.

If you have a concern, question, need a ride to a program or just want to chat please feel free to give me a call or shoot me an email. As always please join us and join in—you might be surprised at how much fun it is!

Karen Tucker



To contact Karen, email  
KarenLTucker@comcast.net

## Chaverim • Kadima • USY

### WHAT'S GOING ON IN CHAVERIM?

Our Chanukah season saw so many great events, from our chocolate making party to the Youth Group Shabbat concluding with our Tzedaka Mania Event on Jan 6th.

Upcoming Events include.

**Feb 6th** - *Girls Only event* with Movies, Popcorn

and so much more!

**Feb 13th** - *Boys only event* with Mario Kart Tournament, Home Run Derby, Ga-Ga, Games and Prizes!

Please feel free to contact Michael Greenstein at CBICHaverim@gmail.com for more information or how to join.



**Adult Forum “Lunch & Learn” programs are now on Thursday!!!**

**at Congregation B’nai Israel**

**160 Millburn Avenue, Millburn, NJ**

**Our programs are open to CBI members and the general community. By all means, bring friends!**

**Lunch begins at 12:30 p.m. and the program begins at 1:00 p.m.**

**JANUARY PROGRAMS**

**January 15** at CBI screen *The Hundred Foot Journey*. This film is handsomely crafted, well-acted and entirely enjoyable. Hassan Kadam is a talented culinary ingénue. When he and his family are displaced from their native India and settle in a quaint French village, they decide to open an Indian eatery. Madame Mallory (Helen Mirren) is the owner of Michelin acclaimed restaurant a mere 100 feet across the road. War erupts between the two establishments.

**January 29** at CBI join us as Rabbi Bayar presents a discussion on the current state of affairs in Israel, whatever they may be at the moment . . . attend this program! Rabbi Bayar’s programs are always thought provoking and informative.

**\$10 for Adult Forum members // \$12 for non-members**

You may pay at the door, but you need to **contact Lois IN ADVANCE at 973-533-1809** with your lunch order.

Our sandwiches and salads come from Bubbe’s (Livingston).

SANDWICH CHOICE: egg salad, corned beef, roast beef, turkey, tuna or pastrami or SALAD CHOICES: Chopped house salad, or chopped house salad with turkey.

**Adult Forum Fall 2014 “On the Road” Trips  
with JCC of Central New Jersey!**

**We are currently in the planning stage for several spring trips. We will announce them as soon as details have been finalized.**

For information about membership, programs or trips, please contact  
**Lois Dyer 973-533-1809 // [penzoe1@comcast.net](mailto:penzoe1@comcast.net)**  
Adult Forum Program Coordinator



## SALUTING OUR SUPER SENIORS: Merna and David Most

By Sheldon Greenholtz



**David and Merna Most**

The Most Family joined CBI in 1963. Dr. David, of blessed memory, passed away this past September. Township residents for almost a half century, before moving to Florham Park in 2010, their four children were B'nai Mitzvahed at our synagogue. Andy lives in Sparta, NJ, Carolyn and granddaughter, Minna, reside in Louisville, Colorado, Henry and significant other, Shari, live in San Francisco, and Bill, Susan and three sons are in Syosset, Long Island.

Merna was active in CBI PTO, serving as co-president. In 1975 she helped develop plans to implement the creation of the Hedwig Gruenewald Nursery School. David designed and supervised building of its playground, as part of a community wide project. Merna was a long time Sisterhood member, as well as a Life Member of Hadassah. She has served on CBI's special needs committee and has been active in Shabbat programs at JESPY House. In the 1970's, Merna was also instrumental in developing the South Mountain after school enrichment program.

Merna received an MA in Behavioral Psychology and Certification in Education, with an

emphasis on learning issues. She worked at JESPY House doing job training and placement for

sixteen years. She then directed Community Personnel Services, the vocational program at ECLC

of New Jersey, a Chatham based special education school serving students from primary

through senior school, until retiring in 2007. Merna proudly notes that many of the adults with special needs that she secured jobs for within the Greater Federation Community still hold these jobs, some after 25 years.

Merna has also been active in volunteer work with adults with special needs, serving as a board

member of Federation's Jewish Service for the Developmentally

Disabled and its WAE (Wellness, Arts and Enrichment) Center Committee. After moving to Florham Park she returned to work part time as an employment specialist at JVS in East Orange and continues on a limited basis.

David, born and raised in Brooklyn, graduated from City College of New York and completed certification in optometry at Columbia University. In 1942, he enlisted in the Air Force, studying advanced electronics at Harvard and M.I.T. He then spent the duration of World War II installing radar equipment and instructing B-29 bomber crews in the use of this new technology.

After discharge, Dr. Most taught physiology and biophysics at NYU's School of Dentistry, while pursuing a doctorate degree. He invented and produced one of the first electronic flash units, and eventually returned to optometry, his occupation until retirement. He was a member of CBI Men's Club for many years.

Merna and Henry were regular attendees at Rabbi Bayar's classes, where David would often question, discuss and challenge the material presented. He was a very active and interested participant. David's analytic and inquiring mind remained clear until he passed away at 95.

Merna is a frequent attendee at CBI events and activities. The entire Most Family has been part of the fabric of CBI for over a half century. Merna now represents her family connection. May she continue to do so for many more years.

---

*Editor's Note: Each month we will profile a Super Senior who is part of our heritage and history.*



# COMMUNITY EVENTS AT A GLANCE

You can also check the calendar on our website [www.cbi-nj.org](http://www.cbi-nj.org)

## Thursday, January 1 – HGECC Closed

- 7:10 am Morning Minyan
- 9:30 am-10:30 am Adult Learning - Jewish Look at Christianity w/Rabbi Bayar

## Friday, January 2 – HGECC Closed

- 7:15 am Morning Minyan
- 4:23 pm Candlelighting
- 8:15 pm Kabbalat Shabbat

## Saturday, January 3

- 9:00 am Shabbat Services
- 10:15 am Tefilot Yeladim (Gr. 3-6)
- 10:30 am Tefilot Ketanim (Gr. K-2)
- 10:30 am Tot Shabbat
- 11:15 am Yaldeinu

## Sunday, January 4

- 8:00 am Morning Minyan
- 11:00am-2:00 pm Party Showcase @ Social Hall and Motherwell Lobby

## Monday, January 5 – BBRS Resumes

- 7:10 am Morning Minyan
- 9:30 am Adult Learning Jewish Theology w/Rabbi Bayar
- 7:30 pm Sisterhood Board Meeting

## Tuesday, January 6

- 7:15 am Morning Minyan
- 6:00 pm-7:15 pm Chaverim Tzedakah Olympics
- 7:30 pm Executive Committee Meeting

## Wednesday, January 7

- 7:15 am Morning Minyan

## Thursday, January 8

- 7:10 am Morning Minyan
- 9:30 am-10:30 am Adult Learning Jewish Look at Christianity w/Rabbi Bayar
- 7:30 pm Mission to Europe Summer 2015 Itinerary Planning Meeting

## Friday, January 9

- 7:15 am Morning Minyan
- 4:29 pm Candlelighting
- 6:45 pm Shir Shabbat Service
- 7:00 pm College Reunion Shabbat Dinner
- 8:15 pm Kabbalat Shabbat

## Saturday, January 10

- 9:00 am Shabbat Services Bat Mitzvah of Bridget Grossman
- 10:15 am Tefilot Yeladim (Gr. 3-6)
- 10:30 am Tefilot Ketanim (Gr. K-2)
- 10:30 am Tot Shabbat
- 10:45 am Shabbat Journeys Minyan

## Sunday, January 11

- 8:00 am Morning Minyan
- 8:45 am-11:00 am BBRS Open House
- 10:00 am 11:30 am Adult Learning Walking With Justice - The Ethical Impulse in Rabbinic Judaism
- 5:00 pm Chanting Circle @ Chapel
- 7:00 pm Israel Film Series "The Policeman" @ MPR

## Monday, January 12

- 7:10 am Morning Minyan
- 9:30 am Adult Learning Jewish Theology w/Rabbi Bayar
- 8:00 pm Men's Club Board Meeting

## Tuesday, January 13

- 7:15 am Morning Minyan
- 7:30 pm CBI Board of Trustees Meeting

## Wednesday, January 14

- 7:15 am Morning Minyan
- 9:30 am-11:00 am HGECC Preschool Open House
- 7:15 pm Open Mah Jongg Night

## Thursday, January 15

- 7:10 am Morning Minyan
- 9:30 am-10:30 am Adult Learning Jewish Look at Christianity w/Rabbi Bayar
- 12:00 pm Adult Forum

## Friday, January 16 – HGECC Closed

- 7:15 am Morning Minyan
- 4:37 pm Candlelighting
- 6:00 pm Early Family Shabbat Service
- 6:30 pm-8:00 pm Private Function (MPR)
- 8:15 pm Kabbalat Shabbat

## Saturday, January 17

- 9:00 am Shabbat Services Bar Mitzvah of Theodore Goldman
- 10:15 am Tefilot Yeladim (Gr. 3-6)
- 10:30 am Tefilot Ketanim (Gr. K-2)
- 10:30 am Tot Shabbat

## Sunday, January 18

- 8:00 am Morning Minyan

## Monday, January 19 – HGECC Closed

- 7:10 am Morning Minyan
- 9:30 am Adult Learning Jewish Theology w/Rabbi Bayar
- 2:00 pm-4:00 pm MLK Mitzvah Day

## Tuesday, January 20

- 7:15 am Morning Minyan

## Wednesday, January 21

- 7:15 am Morning Minyan
- 6:15 pm Sisterhood Rosh Chodesh

## Thursday, January 22

- 7:10 am Morning Minyan
- 9:30 am-10:30 am Adult Learning Jewish Look at Christianity w/Rabbi Bayar

## Friday, January 23

- 7:15 am Morning Minyan
- 4:45 pm Candlelighting
- 6:30 pm Family Shabbat Dinner prepared by Men's Club
- 8:15 pm Kabbalat Shabbat led by Men's Club

## Saturday, January 24

- Shabbat Services led by Men's Club
- 9:00 am Shabbat Services
- 10:15 am Tefilot Yeladim (Gr. 3-6)
- 10:30 am Tefilot Ketanim (Gr. K-2)
- 10:30 am Tot Shabbat

## Sunday, January 25 – BBRS Vav (Offsite)

- 8:00 am Morning Minyan
- 10:00 am-11:30 am Adult Learning Walking With Justice The Ethical Impulse in Rabbinic Judaism

## Monday, January 26 – No Tichon

- 7:10 am Morning Minyan
- 9:30 am Adult Learning Jewish Theology w/Rabbi Bayar

## Tuesday, January 27

- 7:15 am Morning Minyan
- 7:30 pm Sisterhood Knit & Knosh

## Wednesday, January 28

- 7:15 am Morning Minyan

## Thursday, January 29

- 7:10 am Morning Minyan
- 9:30 am-10:30 am Adult Learning Jewish Look at Christianity w/Rabbi Bayar
- 12:00 pm Adult Forum

## Friday, January 30

- 7:15 am Morning Minyan
- 4:54 pm Candlelighting
- 8:15 pm Kabbalat Shabbat led by Sisterhood

## Saturday, January 31

- Shabbat Services led by Sisterhood
- 10:15 am Tefilot Yeladim (Gr. 3-6)
- 10:30 am Tefilot Ketanim (Gr. K-2)
- 10:30 am Tot Shabbat

## ADULT FORUM

November - December 2014

Hello Adult Forum Members,

We welcome in the secular New Year with an enormously enjoyable, well-acted, handsomely crafted film, *The Hundred Foot Journey*. We will screen this movie at B'nai Israel on **January 15**. Hassan Kadam is a talented culinary ingénue. When he and his family are displaced from their native India and settle in a quaint French village, they decide to open an Indian eatery. Madame Mallory (Helen Mirren) is the owner of Michelin-acclaimed restaurant a mere 100 feet across the road. Filled with charm, this film is both picturesque and elegant.

The state of affairs in Israel is in constant flux. Please join us to hear Rabbi Bayar present a program on current events and occurrences in Israel. Come listen, learn and be informed on **January 29**.

Members from B'nai Israel's Adult Forum and the JCC of Central New Jersey group as well as community participants are most welcome to attend trips and programs. We are currently planning several exciting trips for this coming



spring. Information will be available shortly.

We hope to see you at these events, and remember we meet for CBI events on THURSDAYS and we have two new salad options for lunch.

You can pay at the door. **Please call me with your lunch orders.**

Wishing all of you a very Happy, Healthy secular New Year.

Shalom,

Lois Dyer

For information about membership, programs or trips, please contact

**Lois Dyer**

Adult Forum Program Coordinator  
973-533-1809 / penzoe1@comcast.net



## SHIR SHABBAT SERVICE

December 12 at 6:45 p.m.

January 9 at 6:45 p.m.

**Welcome Shabbat with this earlier, partially lay-led service, featuring communal singing as much as possible.  
(*Shir Shabbat is Hebrew for Shabbat Song!*)**

**Shir Shabbat will be a complete Friday night service...**

...with tunes synced with prayers learned in Blanche Bayar Religious School and Golda Och Academy. We hope that families -- youth and adults of all ages -- will take an active part in helping lead. Come experience for yourself...and help us develop **Shir Shabbat** into what you want it to be!

Traditional Kabbalat Shabbat Service Will Take Place at 8:15 p.m. on Both Nights

For more information or if you have any questions, please contact:

Clergy Office at [clergyoffice@cbi-nj.org](mailto:clergyoffice@cbi-nj.org)

or Alex Marcus, Co-Chair, Religious Affairs Committee at [amarcus@mac.com](mailto:amarcus@mac.com).

## DONATIONS

The following tributes have been sent over the past several months. If you wish to send a tribute please call Ana Amorim at 973-379-3811 ext. 10 or email her at [anaa@cbi-nj.org](mailto:anaa@cbi-nj.org).

### Synagogue Fund

Terry Hofflich ~ In memory of Richard.

❖ Sharon & Arthur Draznin

Bruce and Susan Cantor ~ In honor of Melissa's marriage.

❖ Sharon & Arthur Draznin

Julie Katz ~ Mazel Tov on your Bat Mitzvah!

❖ The Pitkowsky Family

Daniel Baer ~ In memory of your beloved mother, Arlette Baer.

❖ Roz & Jed Buck

Allan Sloan ~ Mazel Tov on your milestone birthday!

❖ Helene & Steve Moehlman

The Brownstein Family ~ Mazel Tov on Hannah's Bat Mitzvah!

❖ Carol & Bob Marcus

Elizabeth and Gerald Cohen ~ Mazel Tov on Liat's Bat Mitzvah!

❖ Harriet & Sheldon Greenholtz

Bonnie Wofsy ~ In memory of your sister Mona.

❖ Nan & Howard Greenwald

### Rabbi's Fund

The Weinberg Family ~ Bill and I were sorry to hear the sad news. Evelyne was a wonderful person and we are sure you have many happy memories to sustain you.

❖ Linda and Bill Glasofer

Daniel Baer ~ In memory of your mother, Arlette Baer.

❖ Mike and Janet Slifer

Brett and Heidi Cohen ~ Mazel Tov on koby's Bar Mitzvah.

❖ Roberta Balsam

### Cantor's Fund

Cantor Lorna Wallach and Michael Kalet ~ In honor of Joshua's Bar Mitzvah.

❖ Shirley Alper

Aaron Hubscher ~ Mazel Tov on your Bar Mitzvah!

❖ Len Hausman & Ann Spector

### Hedwig Gruenewald Early Childhood Center Fund

Dan Baer ~ In memory of your mother, Arlette Baer.

❖ Sandy Haimoff

### Dr. Max Gruenewald Adult Education Fund

Allan Sloan ~ Wish you a very happy 70th birthday!

❖ Lisa & Corey Biller

### The Capital Campaign Development Fund

Allan Sloan ~ Mazel Tov on your special birthday!

❖ Marion & Murray Mohl

### Max Alper Prayer Book Fund

The Weinberg Family ~ In memory of Evelyne Weinberg.

❖ Carol & Bob Marcus

### Burk-Mendlovitz Youth Fund

Renee and Kopel Burk ~ Mazel Tov on your granddaughters' marriage.

❖ Shirley Alper

### Phyllis S. Magid Adult Forum Fund

Marcy and Harvey Brooks ~ Thank you for all your help.

❖ Lois Dyer







LIFE & LEGACY is a 2-year partnership program of the Harold Grinspoon Foundation (HGF), with Jewish Federations and Foundations, to assist communities across North America in promoting after-lifetime giving for the benefit of Jewish day schools, synagogues, social service organizations and other Jewish entities.

Through training, support and monetary incentives, LIFE & LEGACY motivates Jewish organizations to secure legacy gifts, steward donors and integrate legacy giving into the philanthropic culture of the Jewish community.

For many of us, some of the most meaningful moments of our lives are inextricably interwoven with our Congregation B'nai Israel community. And there are countless other "everyday" moments that prove just as, if not even more, impactful and enduring: the friendships cultivated during religious school or at a USY event, the spiritual connection felt in Shabbat or holiday services, the meaningful discussions shared in an adult education class. For some it is the stirring of a desire to make a difference in the world inspired by our very active Hearts and Hands Committee, or on our many mission trips. These meaningful moments compel us as we each seek to do our part to make CBI a sustainable entity long after we are gone.

In the upcoming year we will be reaching out to you about participating in this future gift to Congregation B'nai Israel. We look forward to hearing your thoughts and stories about CBI.



## **Millburn Veterinary Hospital** & **Laser Surgery Center**

Aaron Glauber, D.V.M.

147 Millburn Avenue • Millburn, New Jersey 07041  
(973) 467-1700



## Meadowbrook Country Day Camp

*Sunshine and Smiles...Summers at Meadowbrook!*

Roz & Jed Buck  
Owners/Directors

(908) 876-3429  
[www.meadowbrookdaycamp.com](http://www.meadowbrookdaycamp.com)

## Don't Blame the Teacher!

**The Myth:** It's the Teacher's fault when a child fails to succeed in School.

**The Facts:** 80% of Learning Issues are due to weak cognitive skills - skills like attention, memory, auditory or visual processing skills.

**The Fix:** LearningRx One-to-One training **WORKS** by correcting the underlying cognitive skills that cause learning, reading, math and behavior difficulties. We can help your child unlock their true potential in school and in life.

**LearningRx**  
train the brain. get smarter. guaranteed.

For a FREE Consultation Call or Visit Our Website  
**973-376-4646 • [LearningRx.com/short-hills](http://LearningRx.com/short-hills)**

636 Morris Turnpike Suite 1B Short Hills, NJ 070978  
2 Northfield Rd. Suite 207 Livingston, NJ 07932  
52 Upper Montclair Rd. Montclair, NJ 07043



*Exquisite  
Affairs  
Caterers*

**NOW AVAILABLE FOR  
KOSHER & GLATT  
OFF PREMISES CATERING**

Donald Bernstein

Joseph Leschen

**Exclusive Caterers at:**  
*Temple Beth Ahm Yisrael*  
60 Temple Dr.  
Springfield, NJ 07081

(973)258-0655 FAX(973)258-0334  
[www.exquisite-affairs.com](http://www.exquisite-affairs.com)  
[exgaffair@gmail.com](mailto:exgaffair@gmail.com)

### Rich Kantor

125 Park Avenue  
Madison, NJ 07940  
(973) 377-8990  
Fax (973) 377-8995

317 South Avenue West  
Westfield, NJ 07090  
(908) 789-8600  
Fax (908) 789-8609

[RichLFH@verizon.net](mailto:RichLFH@verizon.net)

**LivingFreeHOME**  
Stairlifts • Ramps • Barrier Free Bath •  
Liftchairs • Vehicle Modification  
[www.LivingFreeHome.com](http://www.LivingFreeHome.com)

**HEMOCARE AMERICA**  
Healthcare Products for Every Physical Need

**strategies  
FOR WEALTH**



**Adam Katzman**  
CPA\*, MBA, CLU®, CFP®

Office: 212.701.7982  
Cell: 908.209.7456  
[akatzman@strategiesforwealth.com](mailto:akatzman@strategiesforwealth.com)

- Life Insurance
- Disability Insurance
- Long Term Care
- Annuities
- Retirement Planning
- Estate Planning
- Investments
- Employee Benefits

**Your Life. Your Legacy. Create It.**

Registered Representative and Financial Advisor of Park Avenue Securities LLC (PAS). Securities products and advisory services offered through PAS, member FINRA, SIPC. Financial Representative of The Guardian Life Insurance Company of America (Guardian), New York, NY. PAS is an indirect, wholly-owned subsidiary of Guardian. Strategies for Wealth is an agency of Guardian. It is not an affiliate or subsidiary of PAS.  
\*Not practicing for Guardian or any subsidiaries or affiliates thereof.

## Herb n' Spice Take Out & Catering

Holidays, Shabbos, Catering & Everyday Menus

@ [www.herbnspicecatering.com](http://www.herbnspicecatering.com)

973.740.8800, 184 S. Livingston Av, Livingston

Glatt Kosher, Vaad Metrowest



## LAW OFFICES OF KENNETH F. REMPELL

**DIVORCE AND FAMILY LAW  
COLLABORATION MEDIATION**

**KENNETH F. REMPELL**  
159 Millburn Avenue Millburn, NJ 07041  
Tel: 973.921.0009 Fax: 973.921.2864  
[kenr@kenremPELLlaw.com](mailto:kenr@kenremPELLlaw.com)  
[www.kenremPELL.com](http://www.kenremPELL.com)



**10% OF MY COMMISSION WILL BE DONATED TO CBI  
ON ALL BUSINESS GENERATED FROM THIS AD**



**Roni Wald Chasin**  
Sales Associate  
Certified Luxury Homes Marketing Specialist



488 Springfield Avenue  
Summit, NJ 07901  
Cell: 973-202-2591  
Office: 973-376-0033x136  
Fax: 973-376-1088  
Email: [rwchasin@aol.com](mailto:rwchasin@aol.com)



*Each office is independently owned & operated*

[www.chasinhomes.com](http://www.chasinhomes.com)

**Just pros.**

## BUNCHERS HARDWARE MAPLEWOOD LOCK AND KEY

Hardware  
Locksmith Service  
Windows Repaired  
Handyman Service

**320 Millburn Avenue  
Millburn, NJ 07041**

**Phone: 973-376-0776  
Phone: 973-763-3092**

Short-Term Rehabilitation Center  
Skilled Long-Term Nursing Care ♦ Memory Care  
Hospice & Palliative Care ♦ Respite Stays  
Senior Housing with Assistance  
Medical Transportation Services

1155 Pleasant Valley Way, West Orange, NJ 07052

**Call for a Tour Today: 973-400-3307**

[www.DaughtersofIsrael.org](http://www.DaughtersofIsrael.org)



**Daughters  
of Israel**

Plafsky Cooperman  
family campus family building

## J.L.Apter Memorial Chapels

Jason L. Apter, Manager • NJ Lic. No. 3650



### A NON PROFIT JEWISH FUNERAL HOME

The same dignified full service at greatly reduced prices.

*In the Apter Family Tradition Since 1902*

**SERVICES FROM \$4695\***

*Graveside, Synagogue or at our Chapel*

**Donating \$500 to Congregation B'nai Israel from each funeral**

RESTRICTIONS APPLY

*Pre-arrangement services available in your home*

2122 Millburn Avenue • Maplewood, NJ

**973.376.2600 • 877.278.3765**

\*Graveside/SOP package includes professional charges, preparation, and local transportation. Does not include casket, vault, shroud and cash disbursements such as cemetery fees, death certificates, gratuities. Request our general price list. Call for details.

161 Millburn Avenue  
Millburn, NJ 07041  
Tel 973-467-4220  
Fax 973-467-0918

654 Broadway  
Bayonne, NJ 07002  
Tel 201-243-9999  
Fax 201-243-9998

[www.heartgroup.org](http://www.heartgroup.org)

## THE HEART GROUP, P.A.

KENNETH B. GANTZ, M.D.

FRED M. AUERON, M.D.

ROBERT H. CHARNEY, M.D.

ROY B. SAUBERMAN, M.D.

SUSAN L. SIMANDL, M.D.



**CONGREGATION B'NAI ISRAEL**  
160 MILLBURN AVENUE  
MILLBURN, NEW JERSEY 07041  
(973) 379-3811 • WWW.CBI-NJ.ORG

Non-Profit Org.  
U.S. POSTAGE  
**PAID**  
Permit# 417  
Union, NJ

Return Service Requested



Reaching in to its members and reaching out to the community, Congregation B'nai Israel is a traditional, inclusive, egalitarian, multigenerational community. Characterized by a unique blend of high energy in a low key, warm and welcoming environment, CBI is a place where congregants come together to pursue religious fulfillment, diversified programming and social and community leadership.

**Congregation B'nai Israel (973) 379-3811**

Steven Bayar, Rabbi  
Lorna Wallach, Cantor  
Lisa Roth, Synagogue Administrator

**Education**

Rabbi Helene Kornsgold, Director of  
Congregational Learning  
Rochelle Baron, Director, Early Childhood Center

**Youth Programming**

USY & Kadima - Aly Greenstein  
Chaverim - Michael Greenstein

**Officers**

Andrea Hirschfeld, President  
David Good, 1st Vice President  
Mariela Dybner, 2nd Vice President  
Jamey Potechin, 3rd Vice President  
Stacy Merkel, Recording Secretary  
Adam Katzman, Treasurer  
Steve Katzman, Financial Secretary